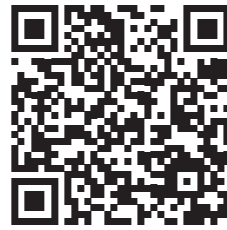
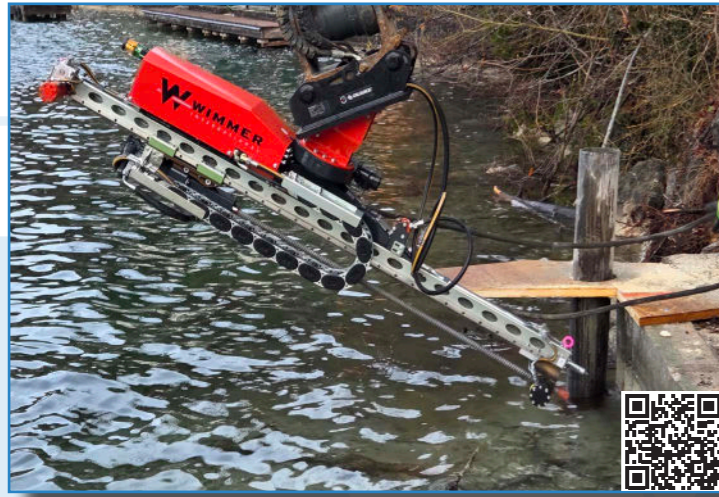


Attachment drilling units

Overview



<<< Product video



AB L100

- For carrier from 4 to.
- Drill & blast, anchoring
- Special foundation, quarry

[weblink click here](#)



AB 1300 - series

- For carrier from 8 to.
- Drill & blast, anchoring
- Special foundation, quarry, tunneling, climb excavator

[weblink click here](#)



AB 2300 - series

- For carrier from 10 to.
- Drill & blast, anchoring, DTH, cased-drilling
- Special foundation, quarry, tunneling, climb excavator

[weblink click here](#)



AB 2600 - series

- For carrier from 18 to.
- Drill & blast, anchoring, DTH, cased drilling, double head
- Special foundation, quarry, tunneling, climb excavator

[weblink click here](#)



AB 3600 - series

- For carrier from 20 to.
- Drill & blast, anchoring, DTH, cased drilling, double head
- Special foundation, quarry, tunneling

[weblink click here](#)



AB 4600 - series

- For carrier from 25 to.
- Drill & blast, anchoring, DTH drilling
- Special foundation, quarry

[weblink click here](#)



AB 6900 T

- For carrier from 28 to.
- Anchoring, DTH, cased drilling, double head
- Special foundation

[weblink click here](#)



WIDA AB C20 / AB 2300 Drill & Split

- For carrier from 12 to.
- Drill & Split
- Special foundation, quarry, tunneling

[weblink WDA](#)

[weblink AB2300 D+S](#)

Attachment drilling unit Ultra-light-carriage AB L100



Remote dimensions
220 x 140 x 150 mm (L/W/D)

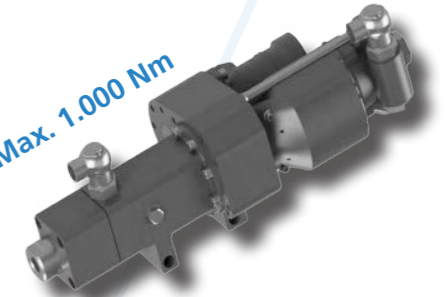


Remote control
model T3



Drill hammer
MA100

Max. 1.000 Nm



Features / Shank adapter

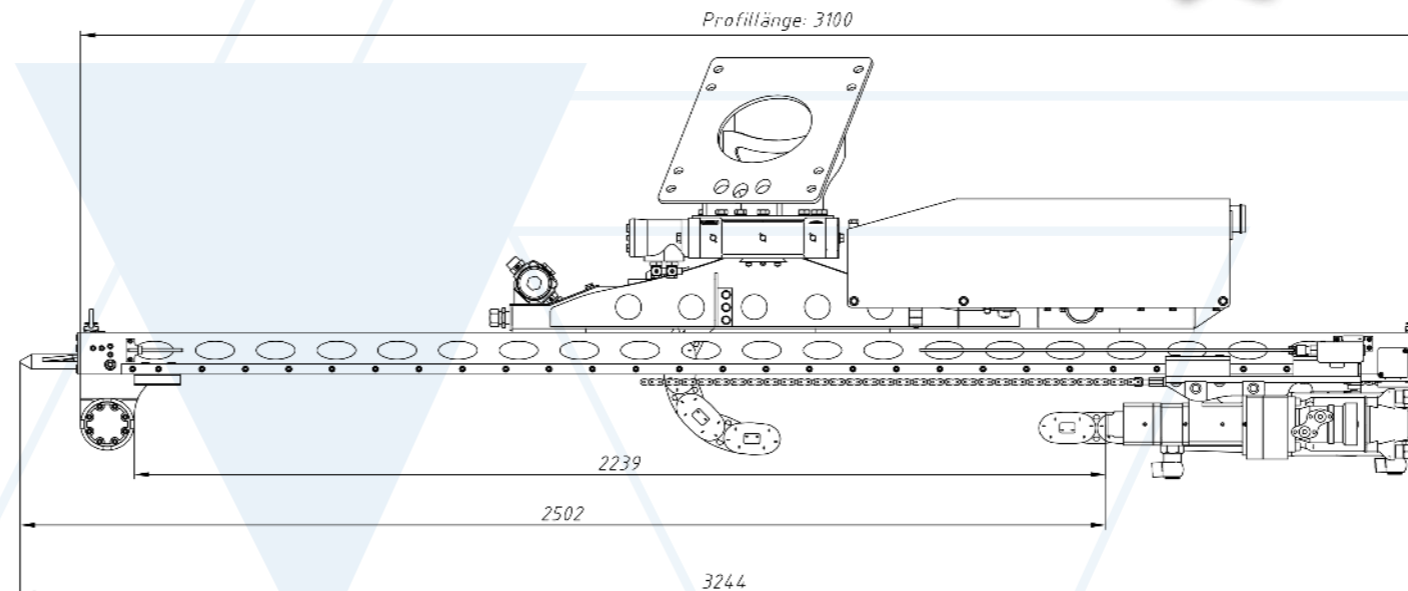
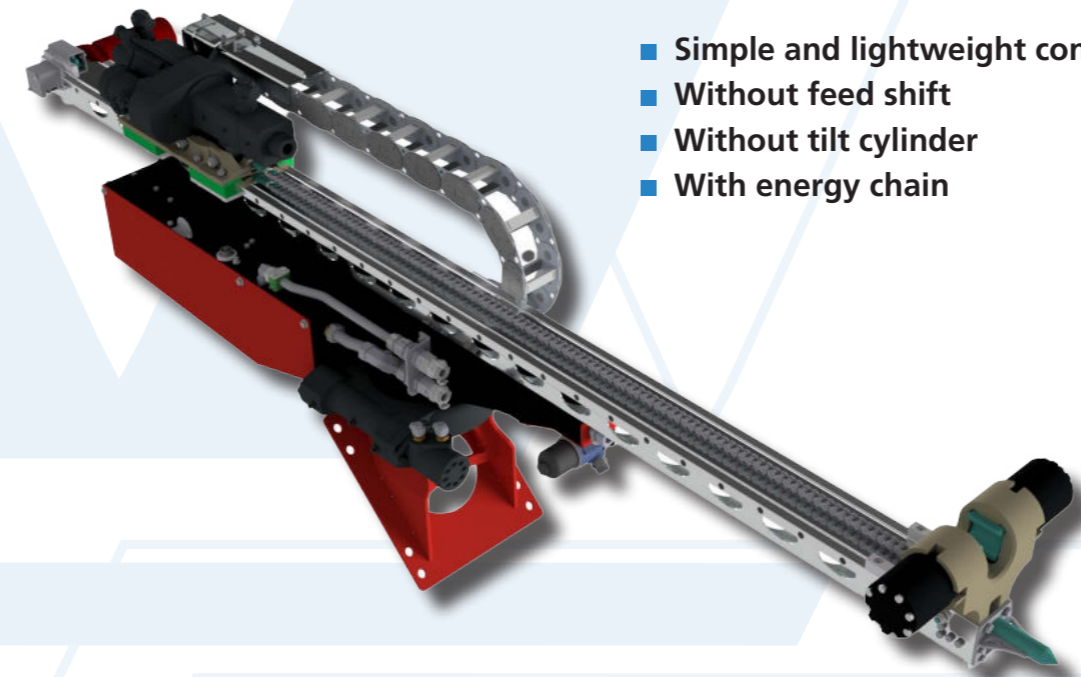
Drill hammer configuration:
Inner thread, air flushing, pneumatic percussion, hydraulic rotation

Possible shank adapters:
R25, R32, R38, R51 TITAN 30/40/52

Motor variants / Torque:
500 Nm, 1.000 Nm

Application:
Drill & blast with extending,
anchor drilling, drill & split

- Simple and lightweight construction
- Without feed shift
- Without tilt cylinder
- With energy chain



Possible accessories as Option:
Extern **Oiler**

■ Attachment for crawler and mobile excavators from 4 to.

[weblink
click here](#)

■ Compact & robust design

■ Stable, ultra-light high-performance profile

■ Simple carriage for anchor and blast hole drilling

Technical details (Subject to change)

ATTENTION: the hydraulic values indicated here after are not to be considered for the regulation of the excavator – please use the instructions!

Model	AB L100 10-PH
Drill hammer	MA100
Torque max., Nm	500 / 1.000
Carriage type	CF100
Carriage tilting	-
Carriage rotation	360° not endless
Standard clamp, single	CF100
Integrated alternator	✓
Remote controlled	✓
Blank firing protection	✓
Anti-jam. automation, hollow protection	✓
Application / Shank adapter	
Drill and blast	R25, R32, T38
Anchor drilling	R32, R38, R51 Titan 30/40/52
Possible features / Options	
Climbversion	-
Angle indication	✓
PLC-Automatic with depth measurement	✓
Wimmer Cockpit	✓
Possible clamp	CF100 (Ø 75 mm)
Clamp-/ breaking device	-
Suction foot	✓
Requirements for the carrier device	
Carrier weight, to.	> 4
Required engine performance, kW	24
Oil supply (L / min)	55 @ 180 bar
Air supply (L / min) - percussion	4.500 @ 6 bar
Pressure max. relief valve (bar)	220
Dimensions and weight	
Weight, kg.	400
Length, mm	3.244
Drill rod length, 1. rod mm	2.435
Drill rod length, 2. rod mm	2.000



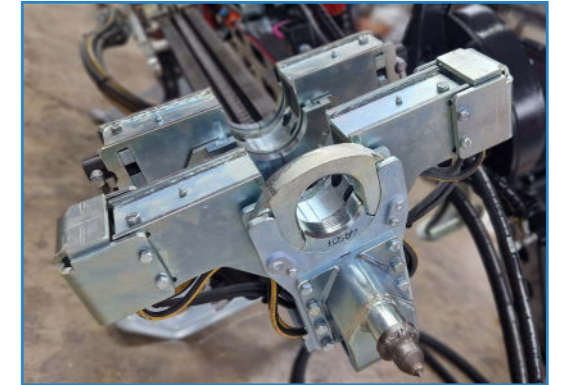
Attachment drilling unit Light universal-carriage **AB 1300 T**



- Attachment for crawler and mobile excavators [weblink click here](#)
- Large selection of carriage and hammer combinations
- Stable, light high-performance profile
- High level of standard equipment, many additional options



Remote control model **T6**



Clamp-/ breaking device \varnothing 135mm



Single clamp **CF200**

AB 1300 T

AB 1300 T Climb



Technical details (Subject to change)

ATTENTION: the hydraulic values indicated here after are not to be considered for the regulation of the excavator – please use the instructions!

Model	AB 1300 T-5 PH / D	AB 1300 T-1	AB 1300 T-4	AB 1300 T-14, 18	AB 1300 T-20	AB1300 T-20 D
Drill hammer	MA100 / ID 160 (D)	RD106	WHL300	WHL300-14, 18	RH2X	RH2X-D
Torque max., Nm	500 / 1.000 / 1.200	100 / 160	400	1.480 (740) / 1.840 (920)	2.120 (1.060)	2.120 (1.060)
Carriage type	CF310	CF310	CF310	CF310	CF310	CF310
Carriage tilting	90°	90°	90°	90°	90°	90°
Carriage rotation	360° not endless	360° not endless	360° not endless	360° not endless	360° not endless	360° not endless
Standard clamp, single	CF200	ohne	CF200	CF200	\varnothing 135mm	\varnothing 135mm
Integrated alternator	✓	✓	✓	✓	✓	✓
Remote controlled	✓	✓	✓	✓	✓	✓
Blank firing protection	✓	✓	✓	✓	✓	✓
Anti-jamming automation, hollow protection	✓	✓	✓	✓	✓	✓
Application / Shank adapter						
Drill and blast	R25, R32, T38	H19, H22, K7/8", H25 / R23-R28	R28, R32, T38	R32, T38	R32, T38	API 2 3/8"
Anchor drilling	R32, R38, R51 Titan 30/40/52	-	-	R32, R38, R51 Titan 30 - 73	R32, R38, R51 Titan 30/40/50	-
DTH - drilling / no overburden drilling	API 2 3/8" (D)	-	-	API 2 3/8"	API 2 3/8"	API 2 3/8"
Possible features / Options						
Climbversion	✓	✓	✓	✓	✓	✓
Angle indication	✓	✓	✓	✓	✓	✓
PLC-Automatic with depth measurement	✓	✓	✓	✓	✓	✓
Wimmer Cockpit	✓	✓	✓	✓	✓	✓
Possible clamp	CF200 / \varnothing 135mm	without / CF200	CF200	CF200 / \varnothing 135mm	CF200 / \varnothing 135mm	CF200 / \varnothing 135mm
Clamp-/ breaking device, double clamp	-	-	-	✓	✓	✓
Suction foot	✓	✓	✓	✓	✓	-
Requirements for the carrier device						
Carrier weight, to.	> 8	> 8	> 10	> 12	> 10	> 8
Required engine performance, kW	24	32	40	58	52	40
Oil supply (L / min)	55 @ 180 bar	85 @ 180 bar	120 @ 160 bar	140 @ 200 bar	125 @ 200 bar	95 @ 200 bar
Air supply (L / min) - percussion	4.500 @ 6 bar	-	-	-	-	-
Pressure max. relief valve (bar)	220	220	220	250	250	250
Dimensions and weight						
Weight, kg. / Standard Climb *	880 1.000	860 1.030	930 1.090	1.030 1.210	920 1.080	870 1.030
Length, mm *	5.075	5.075	5.075	5.075	5.075	5.075
Drill rod length, 1. rod mm *	3.660	4.000	3.660	3.050	3.660	4.000
Drill rod length, 2. rod mm *	3.050	3.660	3.050	3.050	3.050	3.660
Mast feed, mm / Standard Climb	550 780	550 780	550 780	550 780	550 780	550 780

* varies depending on design and application, the profile length can be adjusted as required

Drill hammer,- and rotary head variants AB 1300 T

Drill hammer
MA100



Max. 1.200 Nm

Features / Shank adapter

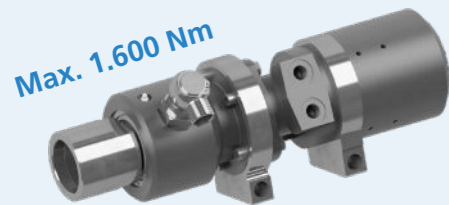
Drill hammer configuration:
Inner thread, air flushing, pneumatic percussion, hydraulic rotation

Possible shank adapters:
R25, R32, R38, R51 TITAN 30/40/52

Motor variants / Torque:
500 Nm, 1.000 Nm, 1.200 Nm

Application:
Drill & blast with extending, anchor drilling, drill & split

Rotary head
ID 160



Max. 1.600 Nm

Features / Shank adapter

Rotary head (D) configuration:
Rotary drilling, air flushing, pneumatic percussion, hydraulic rotation

Possible shank adapters:
API 2 3/8"

Application:
DTH drilling

Drill hammer
RD106



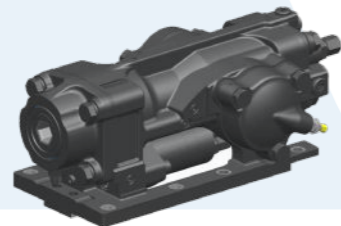
Max. 160 Nm

Variants / Shank adapter

Hexagonal variant:
Hexagon socket, air flushing via flushing pipe

Possible shank adapters:
H19, H22, H25

Application:
Drill & blast without extending, drill & split



Flushing head variant
External thread, air flushing via flushing head

Possible shank adapters:
R23, R25, R28

Application:
Drill & blast with extending, drill & split



Drill hammer
WHL300



Max. 400 Nm

Flushing heads / Shank adapter

Flushing head: HL300 - standard
Shaft \varnothing 32mm, suitable for air flushing

Possible shank adapters:
R28 AG / R32 AG

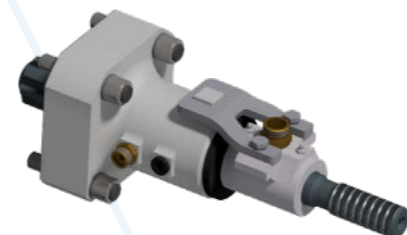
Application:
Drill & blast, drill & split



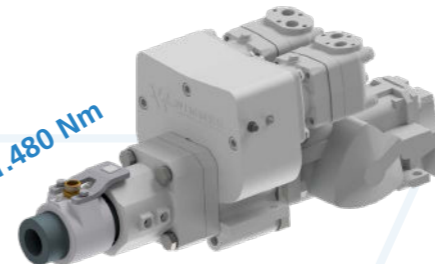
Flushing head: ID. 61275
Shaft \varnothing 38mm, suitable for air & water flushing

Possible shank adapters:
R32 AG / R38 AG / T38 AG

Application:
Drill & blast, drill & split



Drill hammer
WHL300-14



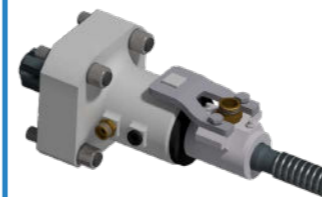
Max. 1.480 Nm

Flushing heads / Shank adapter

Flushing head: ID. 66455
Shaft \varnothing 38mm suitable for air & water flushing

Possible shank adapters:
R32 AG / R38 AG / T38 AG

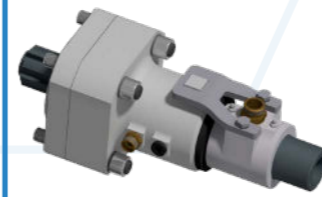
Application:
Drill & blast, drill & split



Flushing head: ID. 66453
Shaft \varnothing 63mm suitable for injection drilling

Possible shank adapters:
Titan 30 IG / R32 IG / R38 IG / T38 IG / Titan 40 IG / T45 IG, AG

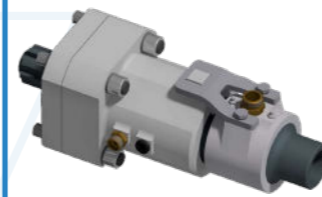
Application: Anchor drilling (Self-drilling anchor)



Flushing head: ID. 65206
Shaft \varnothing 90mm suitable for injection drilling

Possible shank adapters:
R51 IG / T52 IG / Titan 52 IG / T64 IG / **API 2 3/8" / Titan 73 IG

Application: Anchor drilling (Self-drilling anchor), **DTH drilling



Drill hammer / Rotary head
RH2X / RH2X-D



Max. 2.120 Nm

Variants / Shank adapter

Drill hammer Variant:
For impact drilling applications, drill & blast, anchor drilling

Torque max. 2.120 Nm / switchable to 1.060 Nm

Shank adapters:
R44 LH / RH / IB30, IB40 R32, R38, T38 & T45

Rotary head (D) variant:
For simple rotary drilling applications, overburden drilling, DTH drilling

Torque max. 2.120 Nm / switchable to 1.060 Nm

Connection: API 2 3/8"



Perkussion frequency
4.000 min⁻¹
Schlagfrequenz



Attachment drilling unit Robust universal-carriage **AB 2300 T**



- Attachment for crawler and mobile excavators
- Large selection of carriage and hammer combinations
- Stable, light high-performance profile
- High level of standard equipment, many additional options

[weblink
click here](#)



Remote control
model **T6**



Clamp-/ breaking device Ø 135mm



Hose roller

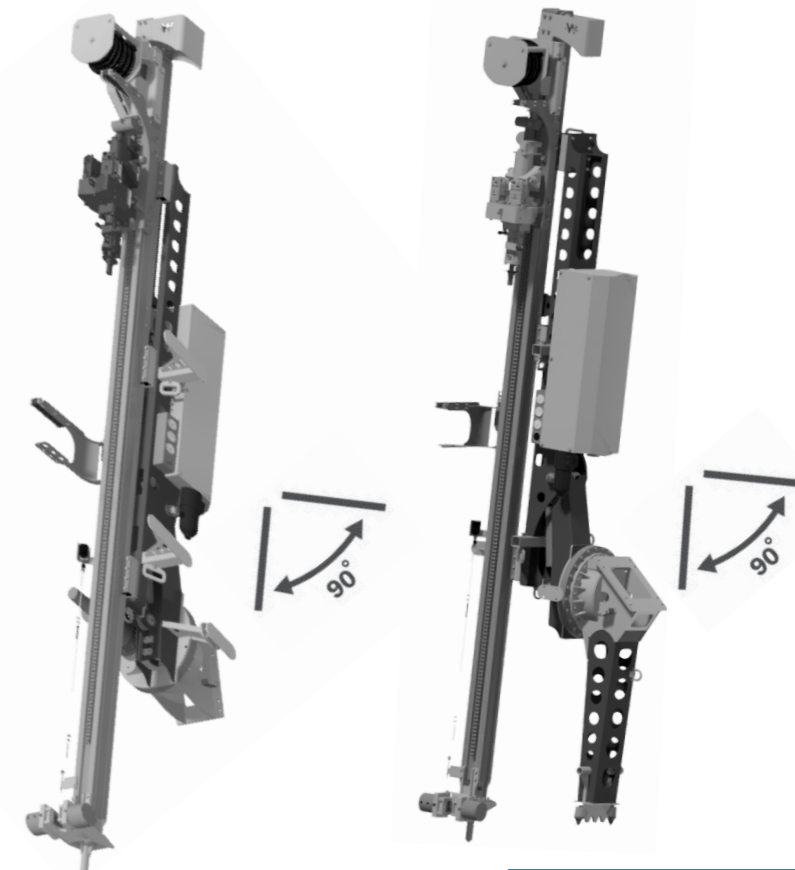
Technical details (Subject to change)

ATTENTION: the hydraulic values indicated here after are not to be considered for the regulation of the excavator – please use the instructions!

Model	AB 2300 T-4	AB 2300 T-23	AB 2300 T-20	AB 2300 T-25	AB 2300 T-20 D	AB 2300 T-25 D
Drill hammer	WHL300	WHL300-23 18 14	RH2X	RH3X, Schlagwerk 20	RH2X-D	RH3X-D
Torque max., Nm	400	2.300 (1.150) 1.480 (740) 1.840 (920)	2.120 (1.060)	2.500	2.120 (1.060)	2.500
Carriage type	CF300	CF300	CF300	CF300	CF300	CF300
Carriage tilting	90°	90°	90°	90°	90°	90°
Carriage rotation	360° endless	360° endless	360° endless	360° endless	360° endless	360° endless
Standard clamp, single	CF200	CF200	CF200	CF200	Ø 135mm	Ø 135mm
Integrated alternator	✓	✓	✓	✓	✓	✓
Remote controlled	✓	✓	✓	✓	✓	✓
Blank firing protection	✓	✓	✓	✓	✓	✓
Anti-jamming automation, hollow protection	✓	✓	✓	✓	✓	✓
Hose roller	✓	✓	✓	✓	✓	✓
Application / Shank adapter						
Drill and blast	R28, R32, T38	R32, T38	R32, T38, T45	R32, T38, T45, T76	-	-
Anchor drilling	-	R32, R38, R51, Titan 30 - 73	R32, R38 Titan 30/40	R32, R38, R51 Titan 30 - 52	-	-
DTH - drilling / overburden drilling	-	R44, H55, H64, API 2 3/8"	R44	H55, H64	API 2 3/8"	API 2 3/8"
Possible features / Options						
Climbversion	✓	✓	✓	✓	✓	✓
Angle indication	✓	✓	✓	✓	✓	✓
PLC-Automatic with depth measurement	✓	✓	✓	✓	✓	✓
Wimmer Cockpit	✓	✓	✓	✓	✓	✓
Possible clamp	CF200	CF200/Ø 135,160mm	CF200/Ø 135,160mm	CF200/Ø 135,160mm	CF200/Ø 135,160mm	CF200/Ø 135,160mm
Clamp-/ breaking device, double clamp	-	✓	✓	✓	✓	✓
Suction foot	✓	✓	✓	✓	-	-
1-rod rod changer	✓	✓	✓	✓	-	-
3-rod rod changer	✓	✓	✓	✓	-	-
Requirements for the carrier device						
Carrier weight, to.	> 10	> 15	> 15	> 15	> 12	> 12
Required engine performance, kW	40	58	52	58	40	52
Oil supply (L / min)	120 @ 160 bar	140 @ 200 bar	125 @ 200 bar	140 @ 200 bar	95 @ 200 bar	125 @ 200 bar
Pressure max. relief valve (bar)	220	250	250	250	250	250
Dimensions and weight						
Weight, kg. / Standard Climb *	1.250 1.380	1.400 1.530	1.250 1.380	1.350 1.430	1.400 1.530	1.490 1.580
Length, mm *	5.935 5.335	5.935 5.335	5.935 5.335	5.935 5.335	5.935 5.335	5.935 5.335
Drill rod length, 1. rod mm *	4.000 3.050	4.265 3.050	4.265 3.660	4.000 3.050	4.500 4.000	4.000 3.500
Drill rod length, 2. rod mm *	3.660 3.050	3.660 3.050	3.660 3.050	3.660 3.050	4.000 3.500	3.500 3.000
Mast feed, mm / Standard Climb	780 780	780 780	780 780	780 780	780 780	780 780

AB 2300 T

AB 2300 T Climb



* varies depending on design and application, the profile length can be adjusted as required

Drill hammer,- and rotary head variants AB 2300 T

Drill hammer
WHL300



Max. 400 Nm

Flushing heads / Shank adapter

Flushing head: HL300 - standard
Shaft \varnothing 32mm, suitable for air flushing

Possible shank adapters:
R28 AG / R32 AG

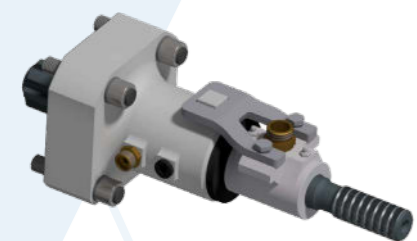
Application:
Drill & blast, drill & split



Flushing head: ID. 61275
Shaft \varnothing 38mm, suitable for air & water flushing

Possible shank adapters:
R32 AG / R38 AG / T38 AG

Application:
Drill & blast, drill & split



Drill hammer
WHL300-23 | 18 | 14



Max. 2.300 Nm

Variants / Flushing heads / Shank adapter

WHL300-23 variant: Torque max. 2.300 Nm / switchable to 1.150 Nm

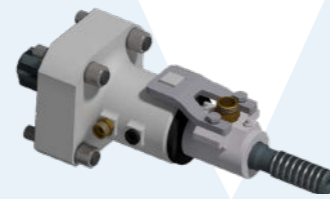
WHL300-18 variant: Torque max. 1.840 Nm / switchable to 920 Nm

WHL300-14 variant: Torque max. 1.480 Nm / switchable to 740 Nm

Flushing head: ID. 66455
Shaft \varnothing 38mm suitable for air & water flushing

Possible shank adapters: R32 AG / R38 AG / T38 AG

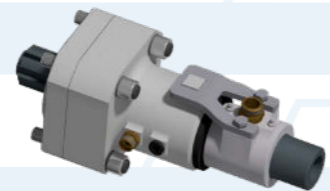
Application:
Drill & blast, drill & split



Flushing head: ID. 66453
Shaft \varnothing 63mm suitable for Injection drilling

Possible shank adapters: Titan 30 IG / R32 IG / R38 IG / T38 IG / Titan 40 IG / T45 IG, AG

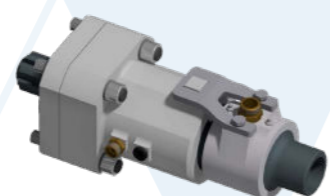
Application: Anchor drilling (Self-drilling anchor)



Flushing head: ID. 65206
Shaft \varnothing 90mm suitable for Injection drilling

Possible shank adapters: R51 IG / T52 IG / Titan 52 IG / T64 IG / **API 2 3/8" / Titan 73 IG

Application: Anchor drilling (Self-drilling anchor), **DTH drilling



Drill hammer / Rotary head
RH2X / RH2X-D



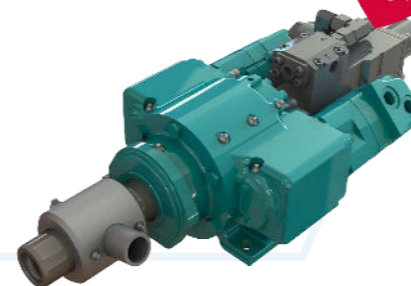
Max. 2.120 Nm

Variants / Shank adapter

Drill hammer Variant:
For impact drilling applications, drill & blast, anchor drilling

Torque max. 2.120 Nm / switchable to 1.060 Nm

Shank adapters:
R44 LH / RH & IB30, IB40
R32, R38, T38 & T45



max. -nigher
Percussion frequency
4.000 min⁻¹
Schlagfrequenz

Rotary head (D) variant:
For simple rotary drilling applications, overburden drilling, DTH drilling

Torque max. 2.120 Nm / switchable to 1.060 Nm

Connection: API 2 3/8"



Drill hammer / Rotary head
RH3X / RH3X-D



Max. 2.500 Nm

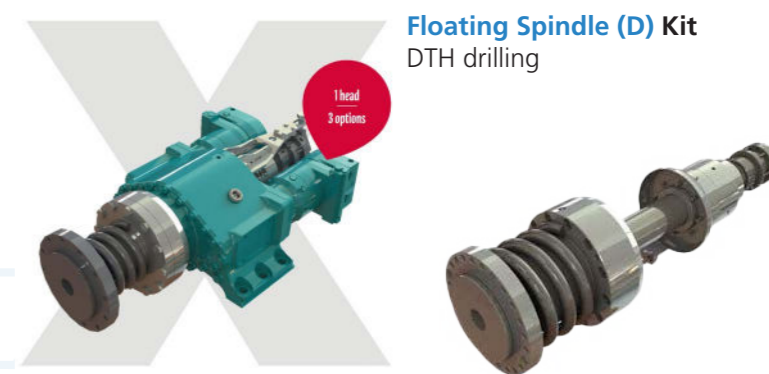
Variants X-series

Rotary (D) Kit
For simple rotary drilling applications, overburden drilling, DTH drilling



1 head
3 options

Floating Spindle (D) Kit
DTH drilling



1 head
3 options

Percussion Kit
For impact drilling applications, drill & blast, anchor drilling
Shank adapters: R44 LH / RH & IB30, IB40
R32, R38, T38 & T45



1 head
3 options

Attachment drilling unit Robust carriage **AB 2600 T**



- Attachment for crawler and mobile excavators [weblink click here](#)
- Large selection of carriage and hammer combinations
- Stable, light high-performance profile
- High level of standard equipment, many additional options



Remote control model **T6**



Clamp-/ breaking device \varnothing 200mm



Option: **Cable winch**

Technical details (Subject to change)

ATTENTION: the hydraulic values indicated here after are not to be considered for the regulation of the excavator – please use the instructions!

Model	AB 2600 T23	AB 2600 T-50	AB 2600 T-50 D	AB 2600 T-5 DH	AB 2600 T-510
Drill hammer	WHL300-23	RH4X	RH4X-D	DH 4	WHL510
Torque max., Nm	2.300 (1.150)	5.000 (2.500)	5.000 (2.500)	5.000 (2.500) outer pipe 2.120 (1.060) inner pipe	625
Carriage type	CF600	CF600	CF600	CF600	CF600
Carriage tilting	90°	90°	90°	90°	90°
Carriage rotation	360° not endless	360° not endless	360° not endless	360° not endless	360° not endless
Standard clamp, single	\varnothing 200mm	\varnothing 200mm	\varnothing 200mm	\varnothing 200mm	\varnothing 200mm
Integrated alternator	✓	✓	✓	✓	✓
Remote controlled	✓	✓	✓	✓	✓
Blank firing protection	✓	✓	✓	✓	✓
Anti-jamming automation, hollow protection	✓	✓	✓	✓	✓
Hose roller	✓	✓	✓	✓	✓
Application / Shank adapter					
Drill and blast	R32, T38	T38, T45, T76	-	-	R32, T38, T45
Anchor drilling	R32, R38, R51, Titan 30 - 73	R32, R38, R51 Titan 40,52	-	-	-
DTH - drilling / overburden drilling	R44, H55, H64, API 2 3/8"	H55, H64, H66	API 2 3/8"	API 2 3/8" outer pipe to \varnothing 200	-
Possible features / Options					
Climbversion	✓	✓	✓	✓	✓
Angle indication	✓	✓	✓	✓	✓
PLC-Automatic with depth measurement	✓	✓	✓	✓	✓
Wimmer Cockpit	✓	✓	✓	✓	✓
Possible clamp	\varnothing 200mm	\varnothing 200mm	\varnothing 200mm	\varnothing 200mm	\varnothing 200mm
Clamp-/ breaking device, double clamp	✓	✓	✓	✓	✓
Suction foot	✓	✓	-	-	✓
1-rod rod changer	✓	✓	-	-	✓
3-rod rod changer	✓	✓	-	-	✓
Cable winch	✓	✓	✓	✓	✓
Requirements for the carrier device					
Carrier weight, to.	> 20	> 20	> 20	> 20	> 20
Required engine performance, kW	58	75	52	73	62
Oil supply (L / min)	140 @ 200 bar	180 @ 200 bar	125 @ 200 bar	175 @ 200 bar	170 @ 175 bar
Pressure max. relief valve (bar)	250	250	250	250	220
Dimensions and weight					
Weight, kg. / Standard Climb *	1.700 1.820	1.750 1.880	1.800 1.930	1.800 2.200	1.700 1.830
Length, mm *	5.720 5.720	5.720 5.720	5.720 5.720	5.440 5.440	5.720 5.720
Drill rod length, 1. rod mm *	3660 3.660	3660 3.660	4.000 4.000	3.500 3.500	3660 3.660
Drill rod length, 2. rod mm *	3.050 3.050	3.050 3.050	3.000 3.000	2.500 2.500	3.050 3.050
Mast feed, mm / Standard Climb	550 780	550 780	550 780	550 780	550 780

AB 2600 T Climb



* varies depending on design and application, the profile length can be adjusted as required

Drill hammer,- and rotary head variants AB 2600 T

Drill hammer WHL300-23



Max. 2.300 Nm

Variants / Flushing heads / Shank adapter

WHL300-23 variant:
Torque max. 2.300 Nm / switchable to 1.150 Nm

Flushing head: ID. 66455
Shaft \varnothing 38mm suitable
for air & water flushing

Possible shank adapters: R32 AG /
R38 AG / T38 AG

Application:
Drill & blast , drill & split

Flushing head: ID. 66453
Shaft \varnothing 63mm suitable for Injection
drilling

Possible shank adapters: Titan 30
IG / R32 IG / R38 IG / T38 IG / Titan
40 IG / T45 IG, AG

Application: Anchor drilling (Self-
drilling anchor)

Flushing head: ID. 65206
Shaft \varnothing 90mm suitable for Injection
drilling

Possible shank adapters:
R51 IG / T52 IG / Titan 52 IG / T64 IG
/ **API 2 3/8" / Titan 73 IG

Application: Anchor drilling (Self-
drilling anchor),
**DTH drilling

Drill hammer / Rotary head RH4X / RH4X-D



Max. 5.000 Nm

Variants X-series

Rotary (D) Kit

For simple rotary drilling applica-
tions, overburden drilling,
DTH drilling



Floating Spindle (D) Kit

DTH drilling



Percussion Kit

For impact drilling applications,
drill & blast, anchor drilling

Shank adapters: R44 LH / RH &
IB30, IB40
R32, R38, T38 & T45



Double-/ rotary head DH4



Max. 5.000 Nm

Max. 2.120 Nm

Variants / Connections / Options

Rotary head - outer pipe RH4X-D

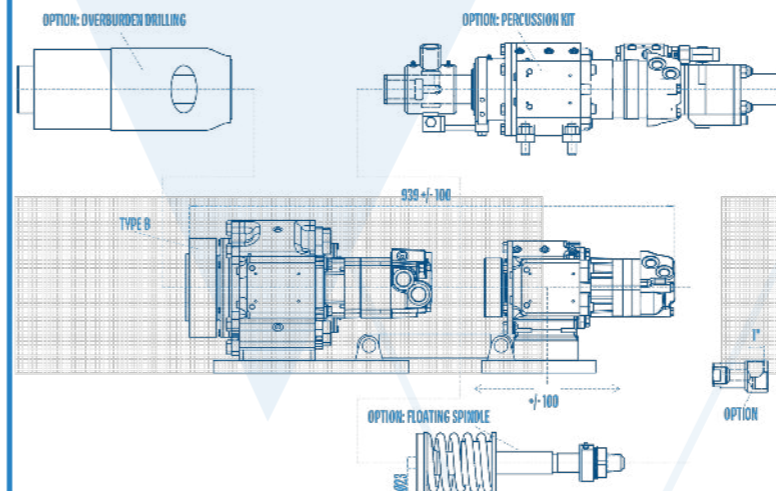
Rotation left/right, torque switchable between 5.000 Nm
and 2.500 Nm
Connection type B

Optional convertible to X-series **Percussion Kit**
or to **Floating Spindle (D) Kit**

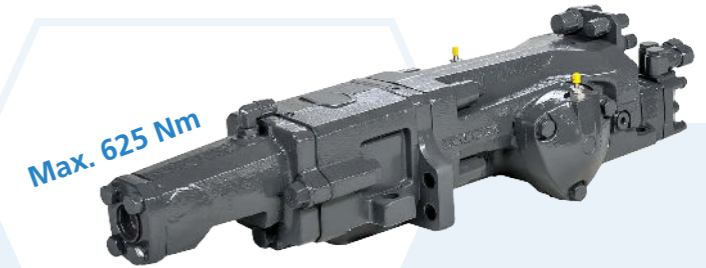
Rotary head - inner pipe RH2X-D

Rotation left/right, torque switchable between 2.120 Nm
and 1.060 Nm
Connection type B
With feed (100mm) to balance and adapt to the respective
geology.

Application:
cased drilling (rotary - rotary), DTH drilling,
Option: Anchor drilling (with conversion)



Drill hammer WHL510



Max. 625 Nm

Flushing heads / Shank adapter

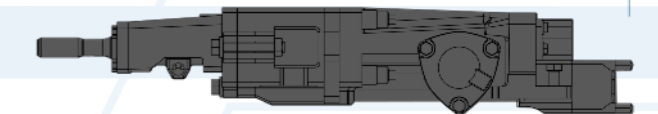
Flushing head: HL510 - standard
Shaft \varnothing 38mm, suitable for air flushing

Possible shank adapters:
R32 male

Application:
Drill & blast , drill & split

HL510S-38

107 1 024



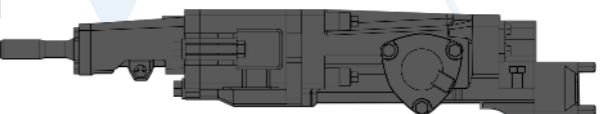
Flushing head: HL510 - standard
Shaft \varnothing 45mm, suitable for air flushing

Possible shank adapters:
R32 male, T38 male, T45 male

Application:
Drill & blast , drill & split

HL510S-45

147 1 024



Attachment drilling unit

Robust universal-carriage **AB 3600 T**

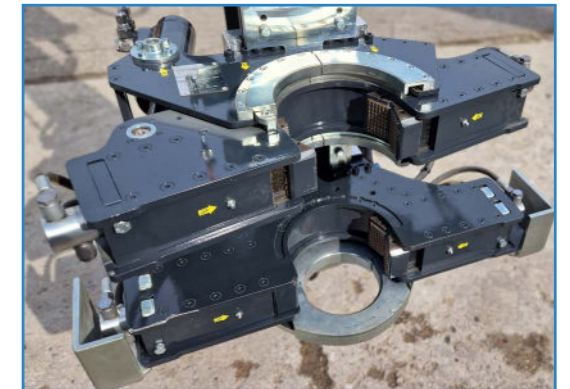


- Attachment for crawler and mobile excavators
- Large selection of carriage and hammer combinations
- Stable, light high-performance profile
- High level of standard equipment, many additional options

[weblink click here](#)



Remote control model **T6**



Clamp-/ breaking device \varnothing 200mm



Double-/ rotary head

AB 3600 T

AB 3600 T Climb



wimmer.info

Technical details (Subject to change)

ATTENTION: the hydraulic values indicated here after are not to be considered for the regulation of the excavator – please use the instructions!

Model	AB 3600 T-50	AB 3600 T-50 P	AB 3600 T-50 D	AB 3600 T-60 (D)	AB 3600 T-5 DH	AB 3600 T-510
Drill hammer	RH4X	RH4X ED15	RH4X-D	RH 6X (D)	DH 4	WHL510
Torque max., Nm	5.000 (2.500)	5.000 (2.500)	5.000 (2.500)	6.600 (3.300)	5.000 (2.500) outer 2.120 (1.060) inner	625
Carriage type	CF600	CF600	CF600	CF600	CF600	CF600
Carriage tilting	90°	90°	90°	90°	90°	90°
Carriage rotation	360° endless	360° endless	360° endless	360° endless	360° endless	360° endless
Standard clamp, single	\varnothing 200mm	\varnothing 200mm	\varnothing 200mm	\varnothing 200mm	\varnothing 200mm	\varnothing 200mm
Integrated alternator	✓	✓	✓	✓	✓	✓
Remote controlled	✓	✓	✓	✓	✓	✓
Blank firing protection	✓	✓	✓	✓	✓	✓
Anti-jamming automation, hollow protection	✓	✓	✓	✓	✓	✓
Hose roller	✓	✓	✓	✓	✓	✓
Application / Shank adapter						
Drill and blast	T38, T45, T76	T38, T45, T76	-	-	-	R32, T38, T45
Anchor drilling	R32, R38, R51 Titan 40,52	R32, R38, R51 Titan 40,52	-	R38	-	-
DTH - drilling / overburden drilling	H55, H64, H66	H55, H64, H66	API 2 3/8"	H64, H66	API 2 3/8" \varnothing 200	-
Possible features / Options						
Climbversion	✓	✓	✓	✓	✓	✓
Angle indication	✓	✓	✓	✓	✓	✓
PLC-Automatic with depth measurement	✓	✓	✓	✓	✓	✓
Wimmer Cockpit	✓	✓	✓	✓	✓	✓
Possible clamp	\varnothing 200mm	\varnothing 200mm	\varnothing 200mm	\varnothing 200mm	\varnothing 200mm	\varnothing 200mm
Clamp-/ breaking device, double clamp	✓	✓	✓	✓	✓	✓
Suction foot	✓	✓	-	-	-	✓
1-rod rod changer	✓	✓	-	-	-	✓
3-rod rod changer	✓	✓	-	-	-	✓
Cable winch	✓	✓	✓	✓	✓	✓
Requirements for the carrier device						
Carrier weight, to.	> 20	> 25	> 20	> 25	> 25	> 25
Required engine performance, kW	75	96	52	75	73	60
Oil supply (L / min)	180 @ 200 bar	230 @ 200 bar	125 @ 200 bar	180 @ 200 bar	175 @ 200 bar	170 @ 170 bar
Pressure max. relief valve (bar)	250	250	250	250	250	200
Dimensions and weight						
Weight, kg. / Standard Climb *	1.950 2.180	2.050 2.280	1.950 2.180	2.100 2.330	2.100 2.230	1.950 2.180
Length, mm *	6.520 5.720	6.520 5.720	6.020 6.020	6.020 6.020	5.720 5.720	6.520 5.720
Drill rod length, 1. rod mm *	4.265 3.660	4.265 3.660	4.000 4.000	3.660 3.660	3.500 3.500	4.265 3.660
Drill rod length, 2. rod mm *	3.660 3.050	3.660 3.050	4.000 3.500	3.050 3.050	2.500 2.500	3.660 3.050
Mast feed, mm / Standard Climb	1.180 1.180	1.180 1.180	1.180 1.180	1.180 1.180	1.180 1.180	1.180 1.180

* varies depending on design and application, the profile length can be adjusted as required

Drill hammer,- and rotary head variants AB 3600 T

Drill hammer / Rotary head RH4X / RH4X-D



Variants X-series

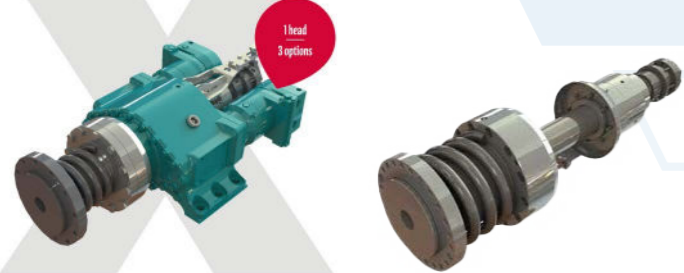
Rotary (D) Kit

For simple rotary drilling applications, overburden drilling, DTH drilling



Floating Spindle (D) Kit

DTH drilling

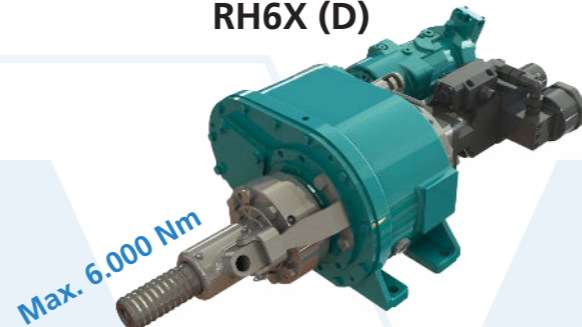


Percussion Kit

For impact drilling applications, drill & blast, anchor drilling
Shank adapters: R44 LH / RH & IB30, IB40 R32, R38, T38 & T45



Drill hammer / Rotary head RH6X (D)



Variants / Connections / Options

Max. turning speed **750 U/min**

Variant as **drill hammer with percussion Typ 20**

With connection H64, optional with H66 and flushing shaft with R38 female

Application:

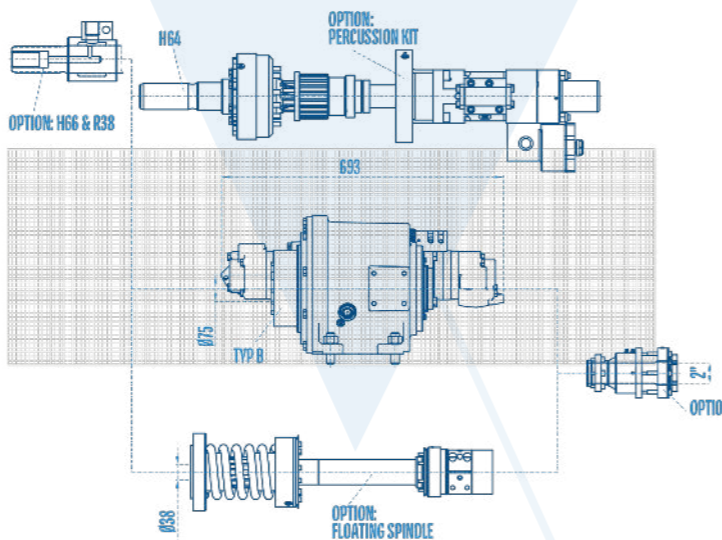
Anchor drilling, overburden drilling

Variant as **rotary head RH 6X-D**

Rotary Kit with connection type B, optional also with **Floating Spindle**

Application:

DTH drilling, overburden drilling



Double-/ rotary head DH4



Variants / Connections / Options

Rotary head - outer pipe RH4X-D

Rotation left/right, torque switchable between 5.000 Nm and 2.500 Nm
Connection type B

Optional convertible to X-series **Percussion Kit** or to **Floating Spindle (D) Kit**

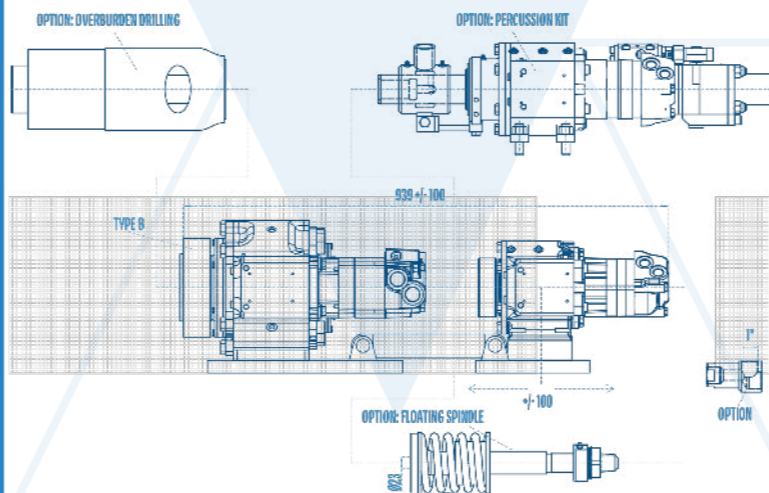
Rotary head - inner pipe RH2X-D

Rotation left/right, torque switchable between 2.120 Nm and 1.060 Nm.
Connection type B

With feed (100mm) to balance and adapt to the respective geology

Application:

Cased drilling (rotary - rotary), DTH drilling, Option: Anchor drilling (with conversion)



Drill hammer WHL510



Flushing heads / Shank adapter

Flushing head: HL510 - standard

Shaft \varnothing 38mm, suitable for air flushing

Possible shank adapters:

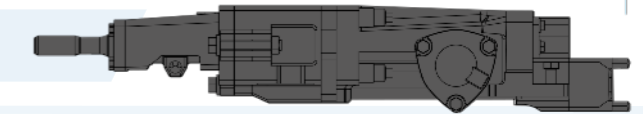
R32 male

Application:

Drill & blast, drill & split

HL510S-38

107 1 024



Flushing head: HL510 - standard

Shaft \varnothing 45mm, suitable for air flushing

Possible shank adapters:

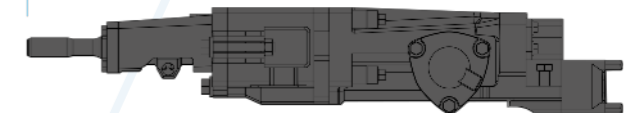
R32 male, T38 male, T45 male

Application:

Drill & blast, drill & split

HL510S-45

147 1 024



Attachment drilling unit Robust carriage **AB 4600 T**



- For efficient drilling, use in quarries
- Rod changer 1-/3-/5-way possible
- Stable, light high-performance profile
- High level of standard equipment, many additional options

[weblink
click here](#)



Remote control
model **T6**



Clamp with **suction foot**



Hose roller for CF600

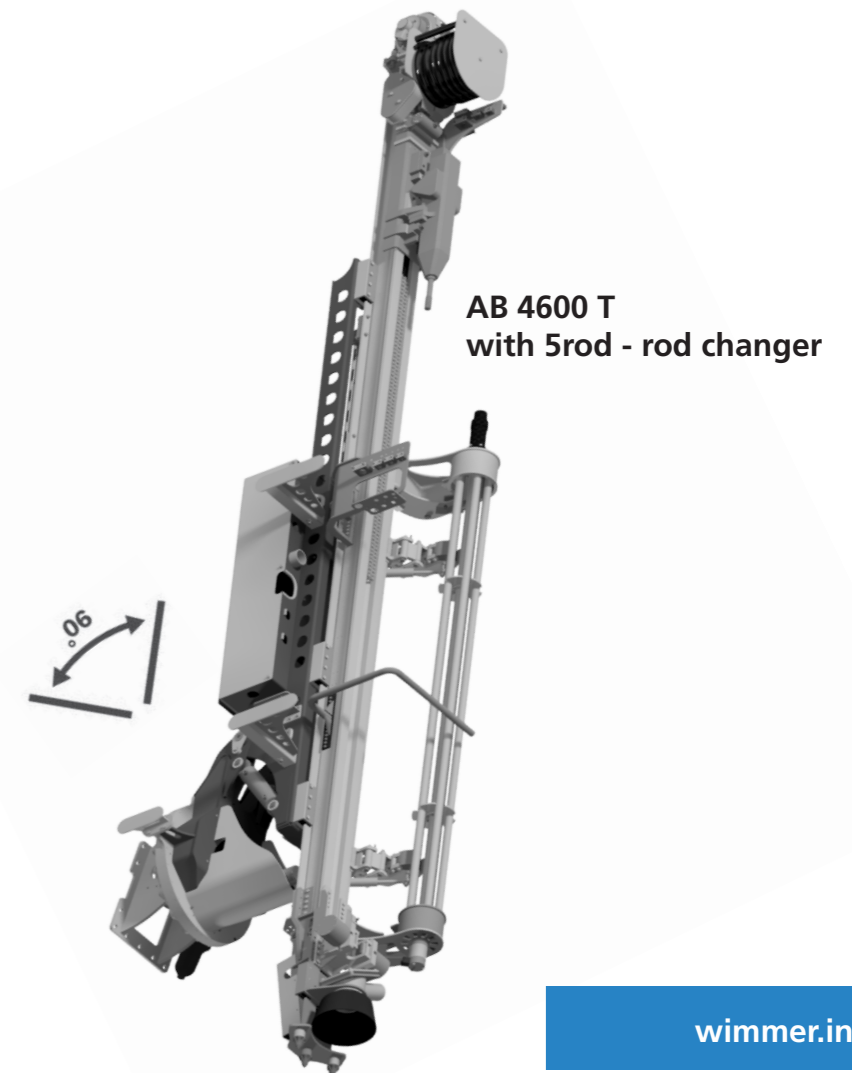
Technical details (Subject to change)

ATTENTION: the hydraulic values indicated here after are not to be considered for the regulation of the excavator – please use the instructions!

Model	AB 4600 T-510	AB 4600 T-710
Drill hammer	WHL510	WHL710
Torque max., Nm	625	1.095
Carriage type	CF600	CF600
Carriage tilting	90°	90°
Carriage rotation	360° endless	360° endless
Standard clamp, single	Ø 200mm	Ø 200mm
Integrated alternator	✓	✓
Remote controlled	✓	✓
Blank firing protection	✓	✓
Anti-jamming automation, hollow protection	✓	✓
Hose roller	✓	✓
Application / Shank adapter		
Drill and blast	R32, T38, T45	T38, T45, T51
Possible features / Options		
Angle indication	✓	✓
PLC-Automatic with depth measurement	✓	✓
Wimmer Cockpit	✓	✓
Clamp feed	✓	✓
Suction foot	✓	✓
1-rod rod changer	✓	✓
3-rod rod changer	✓	✓
5-rod rod changer	✓	✓
Cable winch	✓	✓
Automatic oil-air lubrication of the hammer	✓	✓
Central lubrication system for the rod threads	✓	✓
Requirements for the carrier device		
Carrier weight, to.	> 25	> 30
Required engine performance, kW	62	96
Oil supply (L / min)	170 @ 175 bar	230 @ 200bar
Pressure max. relief valve (bar)	220	250
Dimensions and weight		
Weight, kg. / Standard Climb *	2.100	2.300
Length, mm *	6.430	6.430
Drill rod length, 1. rod mm *	3.660	3.660
Drill rod length, 2. rod mm *	3.660	3.660
Drilling diameter max. (mm)	89	115
Mast feed, mm	1.180	1.180



Application in the quarry **AB4600 T-710**



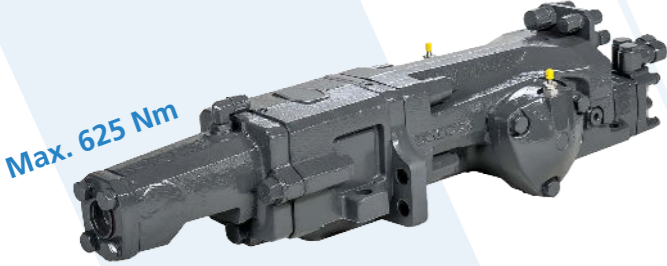
AB 4600 T
with 5rod - rod changer

* varies depending on design and application, the profile length can be adjusted as required

Drill hammer variants, additional equipment

AB 4600 T

Drill hammer
WHL510



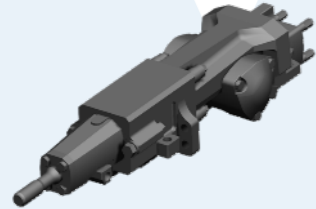
Max. 625 Nm

Flushing heads / Shank adapter

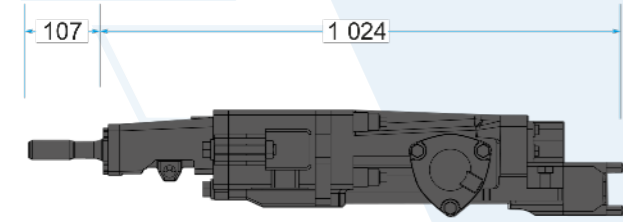
Flushing head: HL510 - standard
Shaft \varnothing 38mm, suitable for air flushing

Possible shank adapters:
R32 male

Application:
Drill & blast, drill & split



HL510S-38

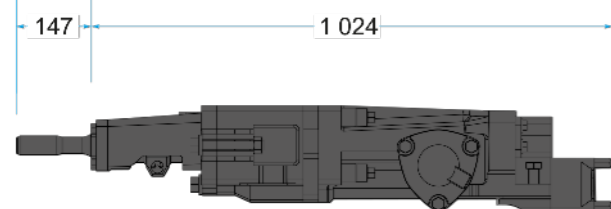


Flushing head: HL510 - standard
Shaft \varnothing 45mm, suitable for air flushing

Possible shank adapters:
R32 male, T38 male, T45 male

Application:
Drill & blast, drill & split

HL510S-45



Drill hammer
WHL710



Max. 1.095 Nm

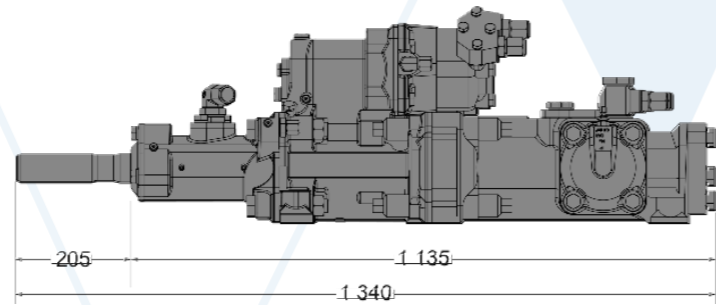
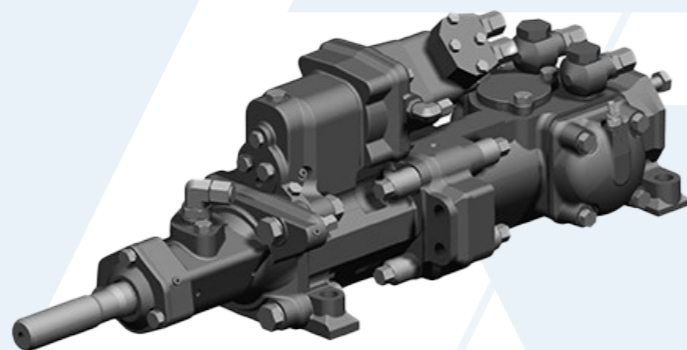
Flushing heads / Shank adapter

Lubrication: Oil-air

Flushing head: HL710 - standard
suitable for air flushing

Possible shank adapters:
T38, T45, T51 male

Application:
Drill & blast



Dust collector
WDC500 X-10 / X-12



Performance data

Filter area: 8 m²
Suction capacity: 15 m³/min
Number of filters: 2 Stk.
Drill \varnothing max.: 100 mm (X-10) / 127mm (X-12)

Hydraulic data

Required oil quantity: 22 L/min
Max. pressure: 200 bar
Turnig speed: 5.000 U/min
required performance: 9,2 kW

Operating voltage: 24 Volt

Variants

Stationary: External on transport frame, manual control

Fix mounted: Installation on excavators, adapted and matched to the carrier (see example below). Automatic control



Compressor
WK6400



Performance data

Flow rate: 3,5 - 6,4 m³
Air pressure: 7 bar

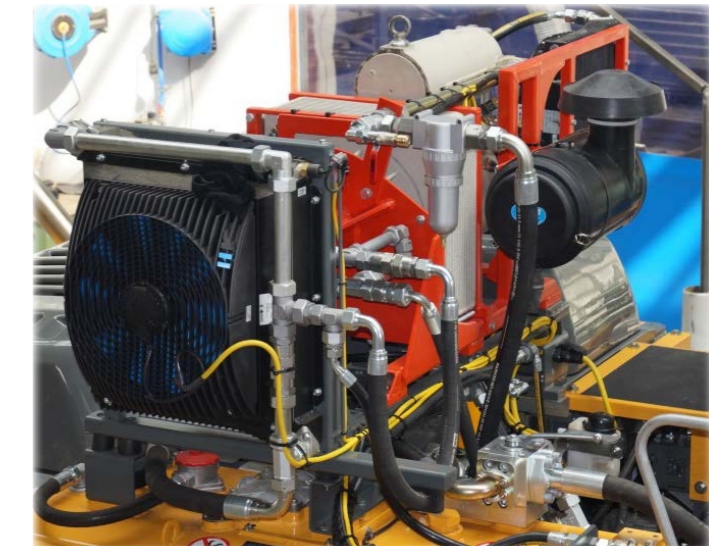
Hydraulic data

Max. pressure: 200 bar
Working pressure: 170 bar

Flow rate m ³ / min	Speed U/min	oil quantity L / min	requirement kW
3,5	1.400	83	21
4,4	1.800	107	28
5,2	2.200	130	35
5,8	2.600	154	42
6,4	3.000	178	49

Variants

Fix mounted: Installation on excavators, adapted and matched to the carrier (see example below). Optionally also with additional cooler



Attachment drilling unit

Robust, special-carriage AB 6900 T

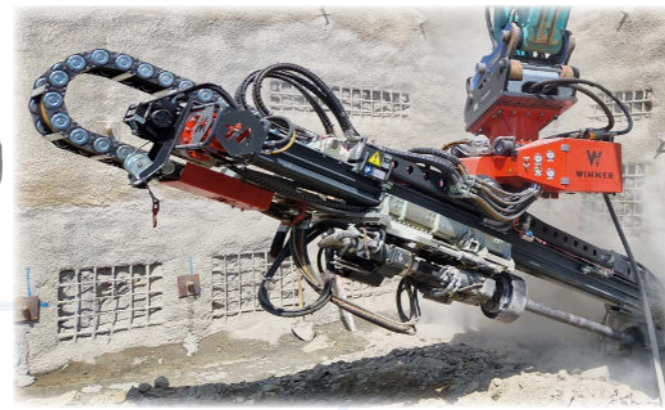


- 12,200 Nm torque – drilling diameter up to 219 mm
- Powerhouse for excavators from 28 tons
- Control box directly on the rollover → less mass to be swiveled
- Robust high-performance profile for high torques

[weblink click here](#)



Remote control model T6



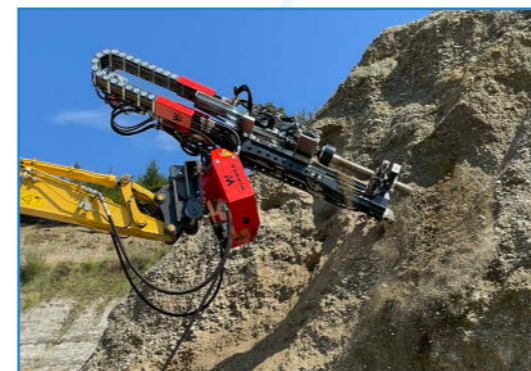
Cross-feed of the rotary head

Technical details (Subject to change)

ATTENTION: the hydraulic values indicated here after are not to be considered for the regulation of the excavator – please use the instructions!

Model	AB 6900 T-120 DH	AB 6900 T-120
Drill hammer	DH 12	RH12X
Torque max., Nm	12.200 / 6.100	12.200 / 6.100
Carriage type	CF900	CF900
Max. Retraction force feed, kN	57	57
Max. Retraction force drill pipe (clamping+retraction), kN	117	117
Carriage tilting	90°	90°
Carriage rotation	360° not endless	360° not endless
Standard clamp, Clamp-/ breaking device, double clamp	Ø 235mm	Ø 235mm
Integrated alternator	✓	✓
Remote controlled	✓	✓
Blank firing protection	✓	✓
Anti-jamming automation, hollow protection	✓	✓
Energy chain	✓	✓
PLC-Automatic with depth measurement	✓	✓
Clamp feed	✓	✓
Application / Shank adapter		
DTH - drilling / overburden drilling, double head	API 2 3/8" / 3 1/2" / connection outer pipe to Ø 219	API 2 3/8" / 3 1/2" , H55, H64, H66
Anchor drilling / injection anchor	-	R32, R38, R51, Titan 40,52
Possible features / Options		
Angle indication	✓	✓
Wimmer Cockpit	✓	✓
Ejection preventer	✓	-
Requirements for the carrier device		
Carrier weight, to.	> 28	> 28
Required engine performance, kW	135	135
Oil supply (L / min)	275 @ 200 bar	275 @ 200 bar
Pressure max. relief valve (bar)	250	250
Dimensions and weight		
Weigth without drilling pipes, kg. *	3.300	3.250
Length, mm	6.430	6.430
Drill rod length, 1. rod / length 1. pipe mm	2.000	3.000
Drill rod length, 2. rod / length 2. pipe mm	2.000	3.000
Drilling diameter max. (mm)	to 219	bis 219 Rotary drilling
Mast feed, mm	700	700

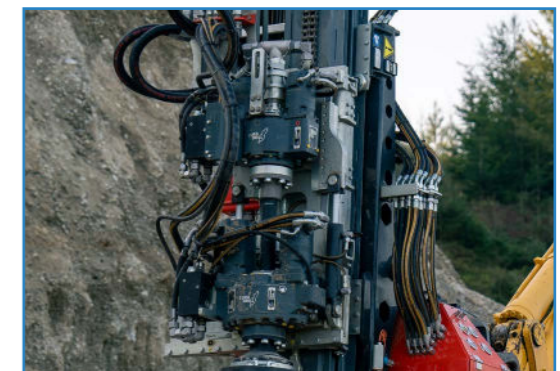
* varies depending on design and application



Use in **exposed locations**



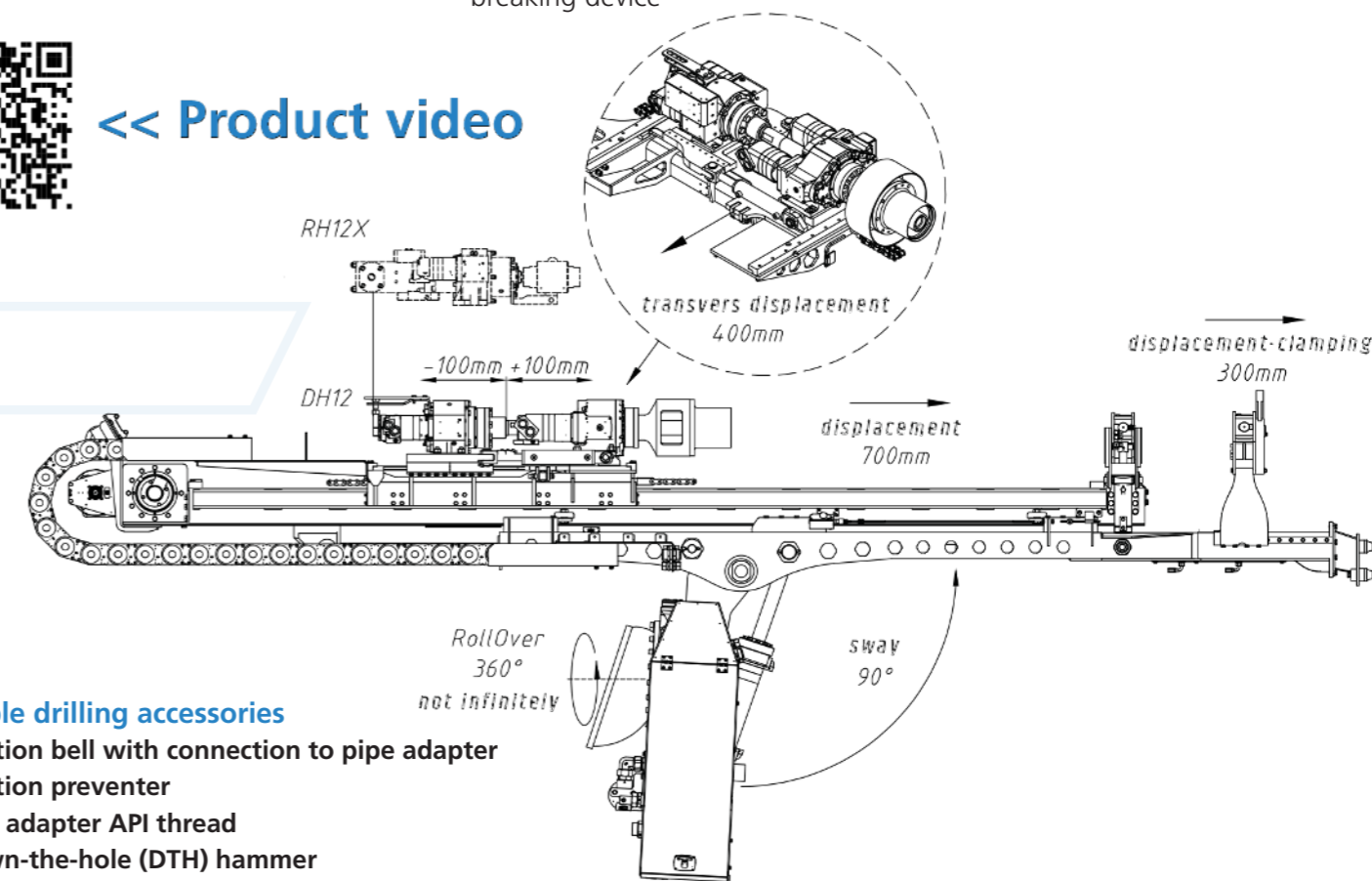
Moveable Clamp-/ breaking device



Double-/ rotary head **DH12**



<< **Product video**



Possible drilling accessories

- Ejection bell with connection to pipe adapter
- Ejection preventer
- Pipe adapter API thread
- Down-the-hole (DTH) hammer
- API-rods

Drill hammer,- and rotary head variants AB 6900 T

Double-/ rotary head
DH 12



Variants / Connections / Options

Rotary head - outer pipe **RH12X-D**

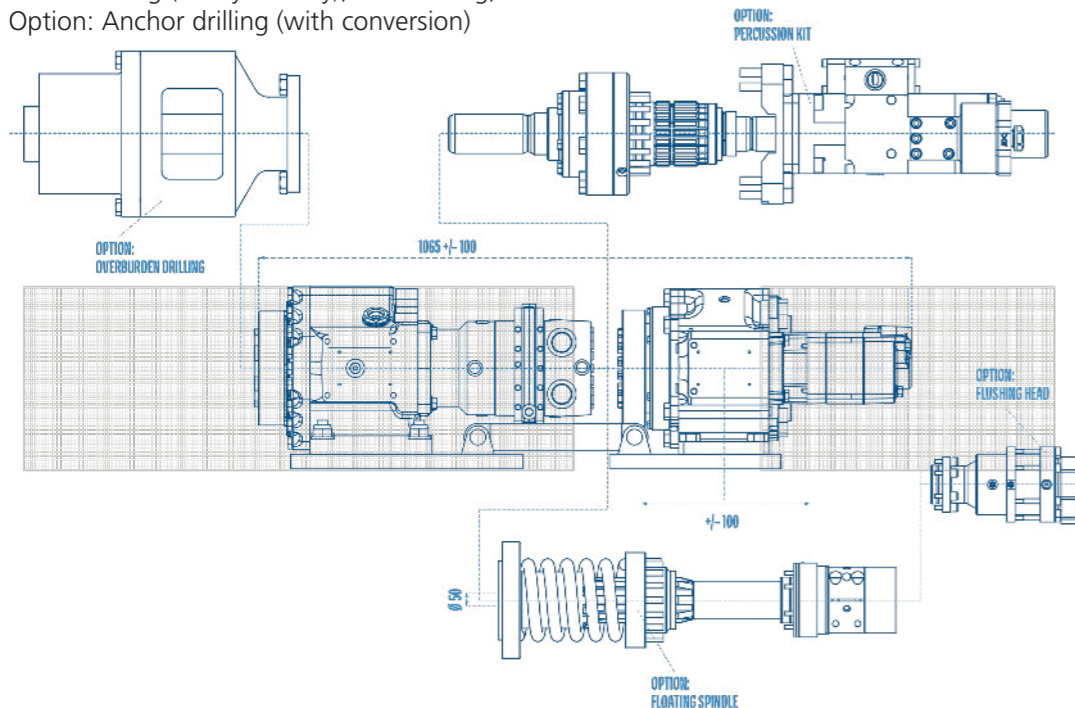
Rotation left/right, torque switchable between 12.200 Nm and 6.100 Nm.
Optional with overburden head

Rotary head - inner pipe **RH4X-D**

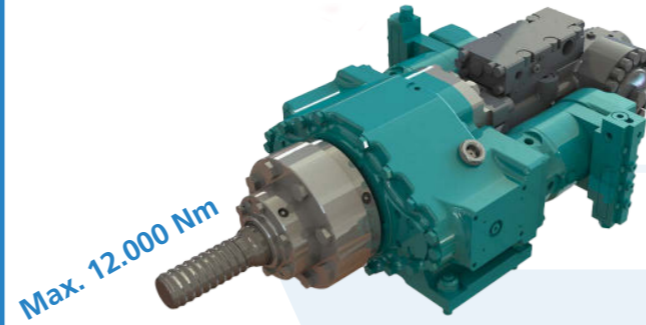
Rotation left/right, torque switchable between 5.000 Nm and 2.500 Nm.
Connection with type B
With feed (100mm) to balance and adapt to the respective geology
Optional convertible to X-series **Percussion Kit** or to **Floating Spindle (D) Kit**

Application:

Cased drilling (rotary - rotary), DTH drilling,
Option: Anchor drilling (with conversion)



Drill hammer / rotary head
RH12X



Variants X-series

Rotary (D) Kit

For simple rotary drilling applications, overburden drilling,



Floating Spindle (D) Kit

DTH drilling

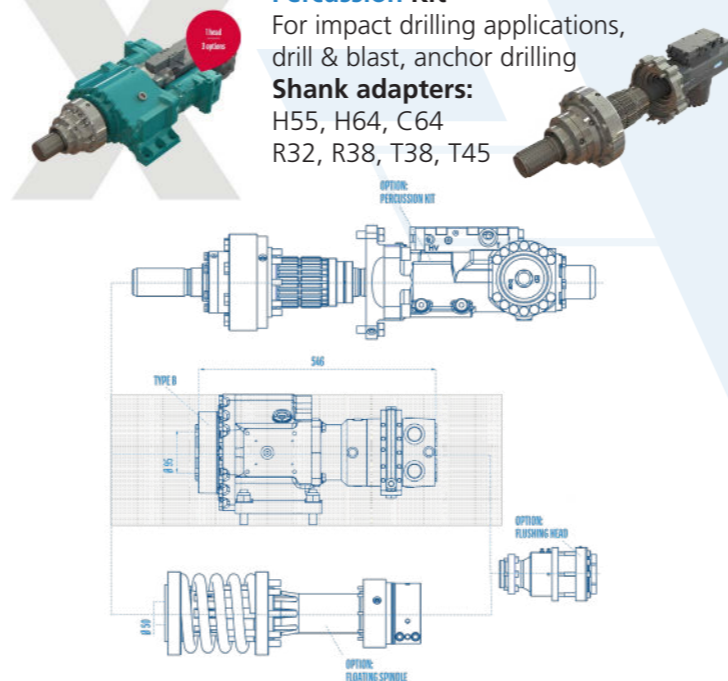


Percussion Kit

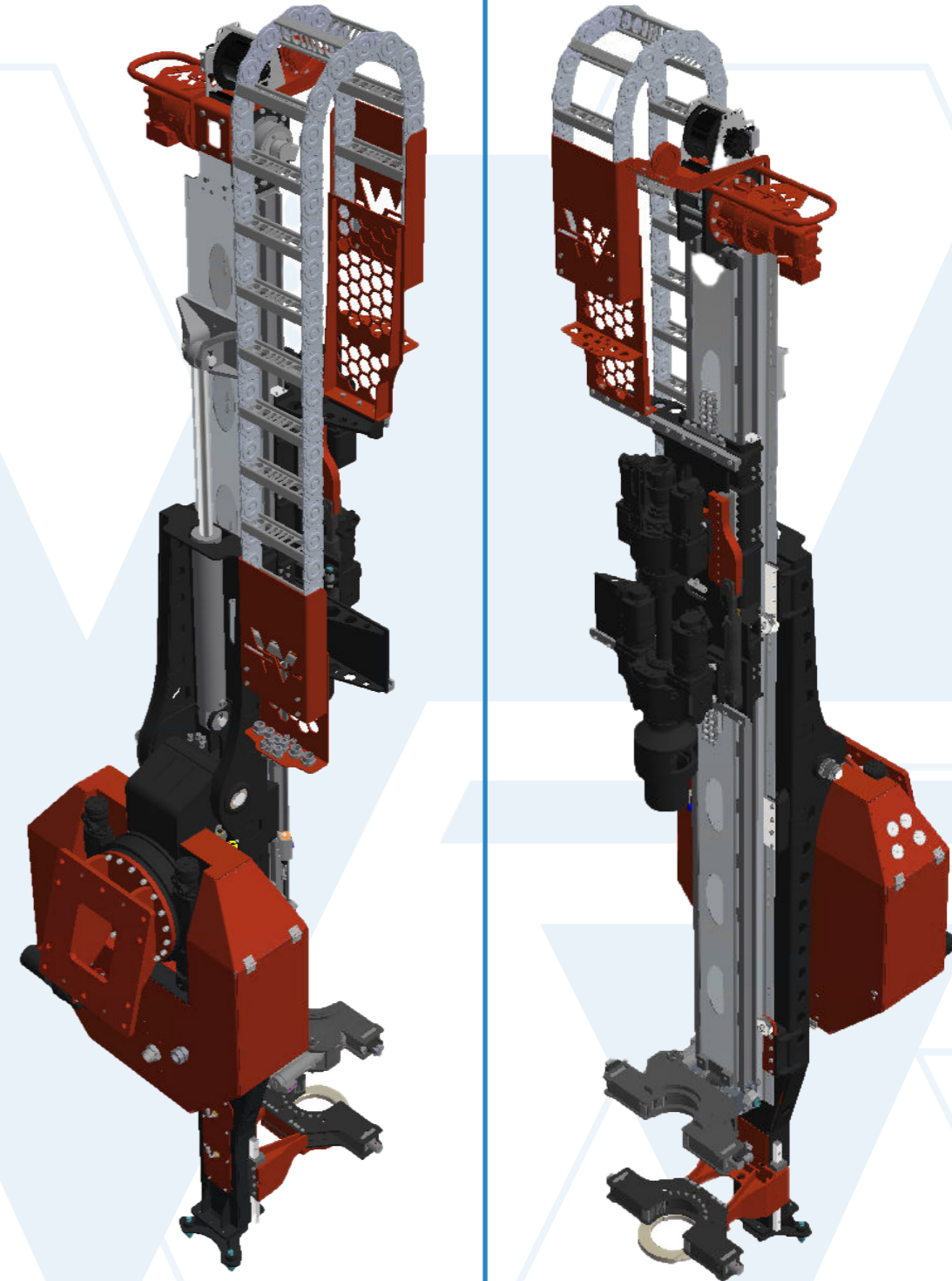
For impact drilling applications, drill & blast, anchor drilling

Shank adapters:

H55, H64, C64
R32, R38, T38, T45



3D-view
AB6900



Attachment drilling unit Drill & Split WIDA | AB2300 D+S



- 2-in-1 function – drilling & splitting in one machine
- Effective splitting – Machine-guided Darda splitting cylinder
- Robust – high-quality components for a long service life
- Flexible – Ideal for quarries, tunnel construction & demolition

weblink
WIDA

weblink
AB2300 D+S



Remote control
model T6



Splitting process with cylinder C 12



Technical details (Subject to change)

ATTENTION: the hydraulic values indicated here after are not to be considered for the regulation of the excavator – please use the instructions!

Model	AB 2300 T-1 D+S	AB 2300 T-4 D+S	WIDA AB C20 T-4
Drill hammer	RD106	WHL300	WHL300
Torque max., Nm	100	400	400
Carriage type	CF300	CF300	CF310
DARDA splitting cylinder	C4 N	C9 N / L	C20 N / L
Effective splitting force, to, N / L	117	358 / 413	1.500 / 1.800
Drill depth min., mm, N / L	430	610 / 680	750 / 950
Carriage tilting	90°	90°	90°
Carriage rotation	360° endless	360° endless	360° not endless
Standard clamp	CF200	CF200	CF200
Integrated alternator	✓	✓	✓
Remote controlled	✓	✓	✓
Blank firing protection	✓	✓	✓
Anti-jamming automation, hollow protection	✓	✓	✓
Hose roller	✓	✓	-
Telescope version	✓	✓	-
Splitting cylinder positioning	Swing in	Swing in	Turn in
Application / Shank adapter			
Drill & split / Drill Ø, mm	34 - 36	45 - 48	76
Standard drill rod, shank adapter	H19, H22, K7/8", H25 / R23-R28	R28, R32, T38	R32, T38
Possible features / Options			
Angle indication	✓	✓	✓ (standard)
PLC-Automatic with depth measurement	✓	✓	✓ (standard)
Wimmer Cockpit	✓	✓	✓
Suction foot	✓	✓	✓
Requirements for the carrier device			
Carrier weight, to.	> 10	> 10	> 15
Required engine performance, kW	32	40	40
Oil supply (L / min)	85 @ 180 bar	120 @ 160 bar	120 @ 160 bar
Pressure max. relief valve (bar)	220	220	220
Dimensions and weight			
Weight without adapter, kg.	1.300	1.500	1.730
Length, mm	3.640	5.340	3.155
Drill rod length, mm	2.400	3.050	1.500
Mast feed, mm	1.300	1.300	650



Tunnel-application WIDA AB C20 T-4



Use of the AB 2300 T-4 D+S



<<< Product video WIDA

